

# PROFIBUS

## 1. Bus Analyzer FMS/DP

Bus Analyzer FMS/DP

PROFIBUS

가

12Mbit/s가

가

PROFIBUS

Bus Analyzer FMS/DP

가

Bus

- Data

Analyzer FMS/DP

가

가

, Bus Analyzer FMS/DP

Softing

Bus Analyzer FMS/DP

- PROFIBUS

가

Trigger

(

가

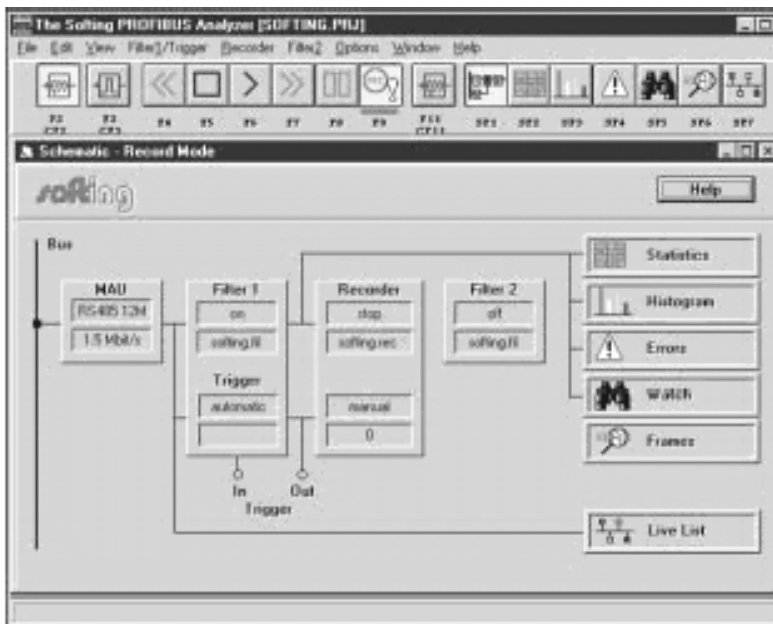
)

가 가

16

가

가 가



Trigger

가

가 가

, TTL

가

PROFIBUS

Analyzer

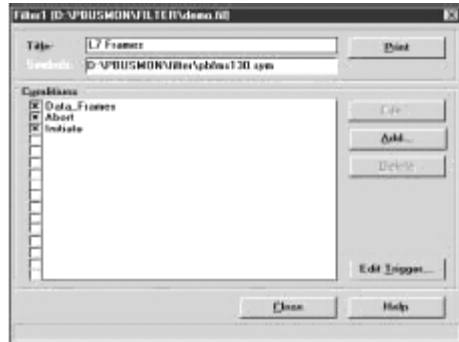
FMS/DP Schematic Window

1. PROFIBUS Analyzer FMS/DP Schematic Window

Analyzer

Data

Bus Analyzer FMS/DP



### FILTER

가

16가

Data

가

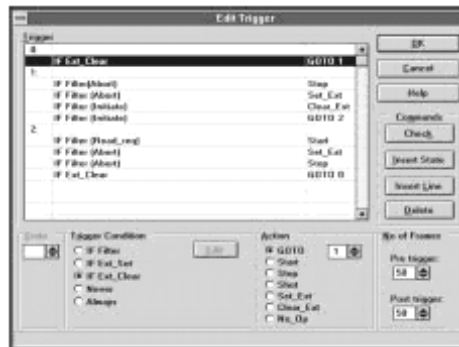
, CONDITION

가 가, Data HISTOGRAM, STATISTICS, ERRORS, WATCH

가 가

LIVE LIST

Data



Bus Analyzer FMS/DP

### TRIGGER

Trigger

. Bus Analyzer FMS/DP

. Trigger

Layer

16가 State Machine

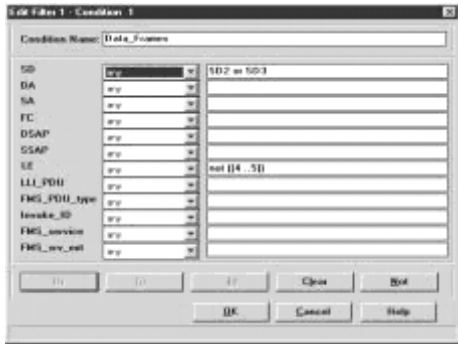
(FMS, LLI, FDL, DP, HEX)

. State Machine

가

Trigger CONDITION

가



WATCH Data MS-  
Windows DDE

가 .

Bus Analyzer FMS/DP

가

**CONDITION**

Trigger

16가

가

Data

Data

Trigering 가 .

**Data**

Bus Analyzer FMS/DP

Data

16 harf

ISA

, MAU

. MAU

**-HISTOGRAM**

PROFIBUS - SUB9

PROFIBUS RS-485

, CN2

**-STATISTICS**

TTL

**-ERRORS**

FDL(Fieldbus Data Link Layer), LLI(Lower

Layer Interface), FMS(Fieldbus Message

Specification), DP(Decentralized

Periphery) Hexa

Data

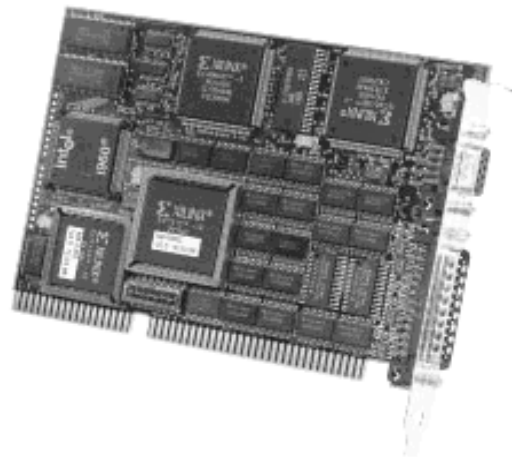
**-WATCH**

가 가 .

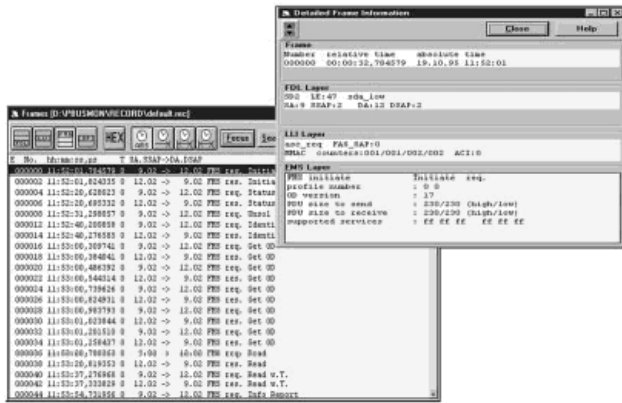
가

PROFIBUS FMS

, ASCII



가 가



- IBM PC/AT
- CPU 80486
- 66MHz
- RAM 8MB
- SVGA
- 
- MS-Windows 3.1
- MS-DOS 6x

- PROFI-MON-HW-12:
- PC/AT
- PROFI-MON-WIN:

( )

UNIT	PC , AT
CPU	INTEL i9605
PC	3, 5, 10, 11, 12, 13
	RS-485
	D-SUB 9
	EN 50 170 part2
	I/O
	+ 5V (±5%), 1.0 (2A max)
	0 ~ 55
	-20 - 70
Baudrate	9.6, 19.2, 93.75, 187.5, 500 Kbit/s 1.5, 3, 6, 12 Mbit/s
PROFIBUS	FMS , DP CLASS 1 CLASS 2, FDL

## 2. PROFiboard

### PROFIBUS Interface for PC/AT's

PROFIBUS

. EN 50 170 part2

PROFIBUS ,

PROFIBUS

2

PROFIBUS-FMS(Fieldbus Message Specification) PROFIBUS-DP(Decentralized Periphery) . PROFIBUS-FMS

, PROFIBUS-DP

가

PROFIboard PC Based

PROFIBUS

Softing PROFIBoard

- FMS

- DP class1 class2

- (FDL)

PROFIBoard EN 50 170 part2

1, 2, 7

PROFIBUS

ASIC(ASPC2TM, SPC3TM)

12Mbaud

PROFIBoard

RS-485 가 , D-SUB 9

PROFIBUS

SAB-C165 가

RAM 64K

PROFIBUS

PC 16K

Windows NT 가 , MS-DOS,

Windows 16 DDL

	ISA PC , AT
CPU	Siemens SAB-C165
	512Kbyte SRAM, 16Kbyte RAM
PC	5, 10, 11, 12, 15
PROFIBUS ASIC	Siemens ASPC2 & SPC3
	RS-485
	D-SUB 9
	EN 50 170 part2
	I/O
	+5V (±5%). 700mA
	0~55
	-20 ~ 70
Baudrate	9.6Kbit/s ~ 12M bit/s
PROFIBUS	FMS & , DP Class1 & 2, FDL ,

Softing PROFIBUS

SCADA(Supervisory and Data Acquisition)

, MMI(Man-Machine Interface) ,

-IBM PC/AT

PROFIBoard

DDE

가

PCMCIA

PROFIBUS PCMCIA

PROFIBUS

가

Softing PROFIcard

### 1 : PROFI-DMK-NT

- PROFIBUS

(PAPI) PAPI ( )

-

- Windows NT

### 2 : PROFI-DMK-3

- Windows(16 ) MS-DOS PROFIBUS

DDL PROFIBUS

(PAPI)

-

- PAPI ( )

- FMS

- DP Class1 Class2

- (FDL)

PROFIcard EN 50 170 part2

FMS DP

PROFIBUS

D-

SUB 9

SAB-C165 가

PROFIBUS

### 3 : Windows(16 ) Windows NT

DDE

- FMS

- DP Class1

- S5-95U, S7-300 ,

ASIC ASPC2가 2 ( : 12Mbit/s

가)

가 가

### 3. PROFIcard

PROFIcard

RS-485

### PROFIBUS interface for PCMCIA

D-SUB 9

16K

RAM(DPRAM)



PROFIBUS FMS/DP Protocol

Software DP Configurator